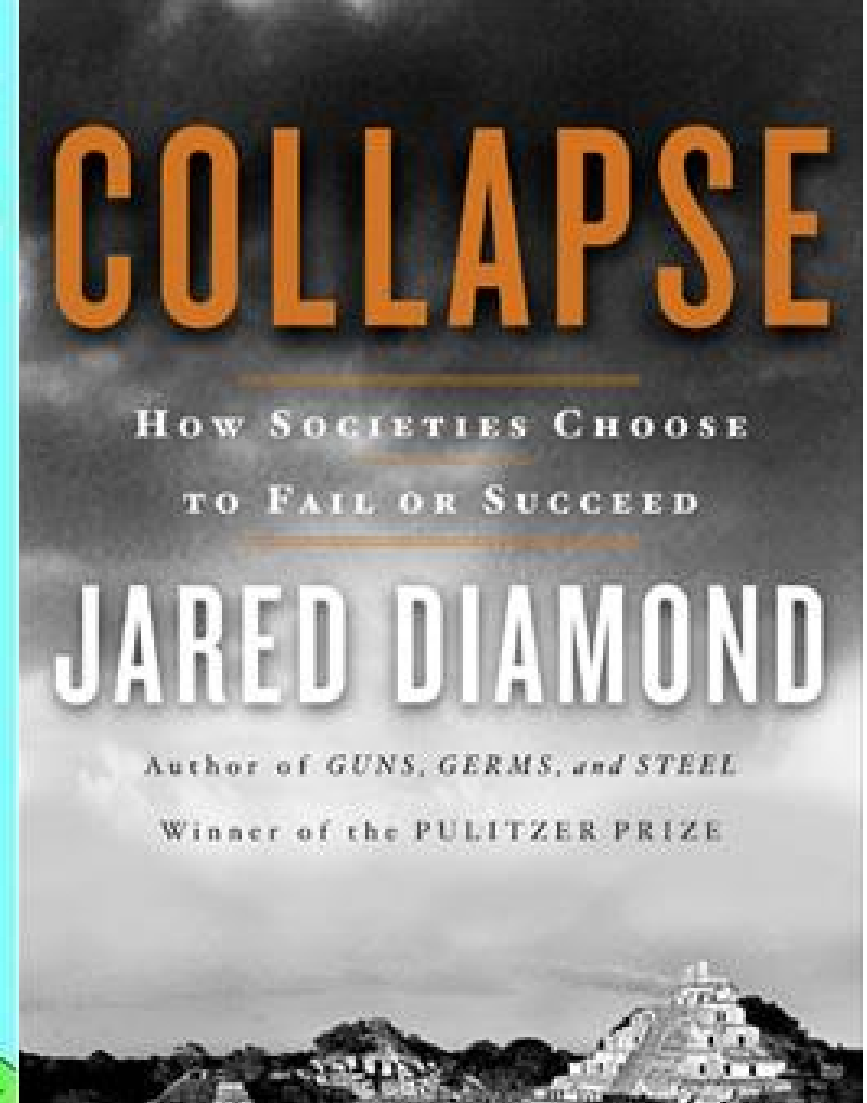
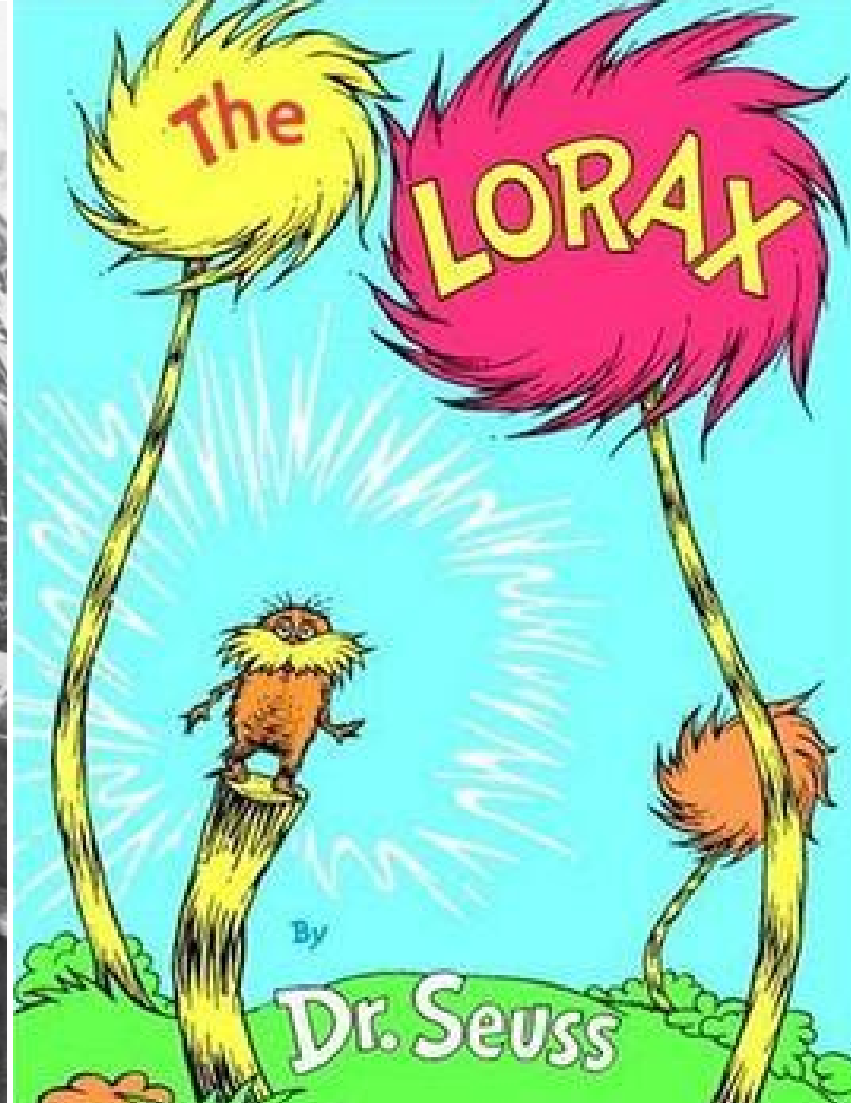


Five natural wonders of the world in Canterbury (that you will likely never see)

Nicholas Head
Ecologist





The ecological emergency is not new (or forgotten) !

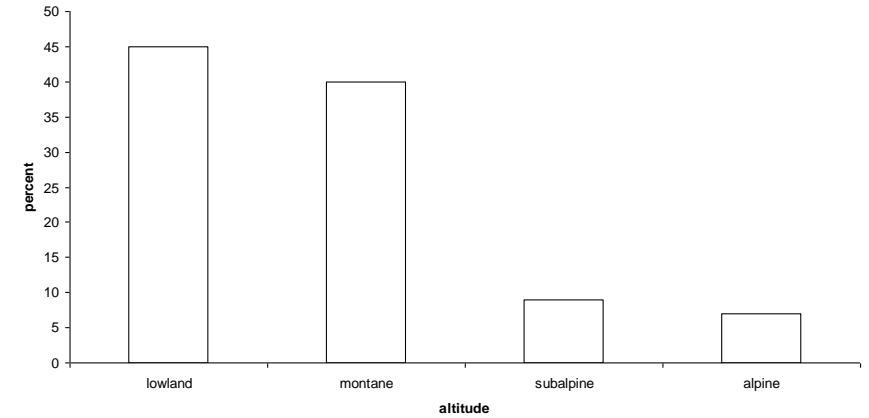
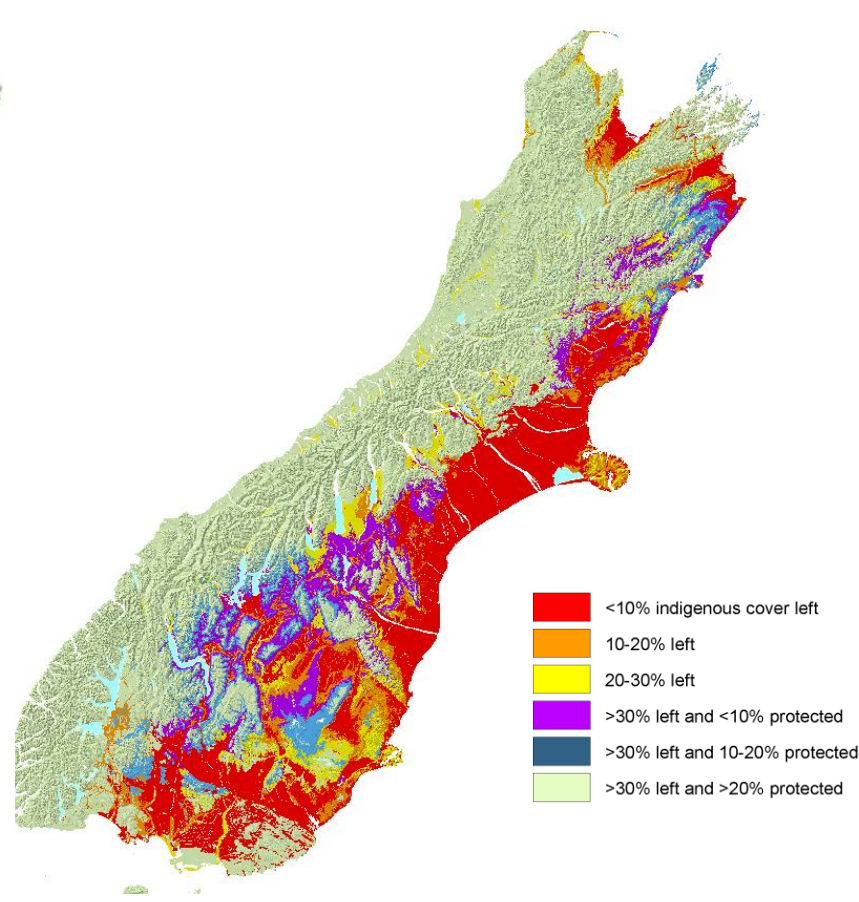
“The PARLOUS STATE” ... rarest most threatened = least protected

Ministerial Advisory Committee (1997): “NZ’s indigenous biodiversity in a parlous state and continuing to decline ... ongoing loss is NZ’s most pervasive environmental issue”

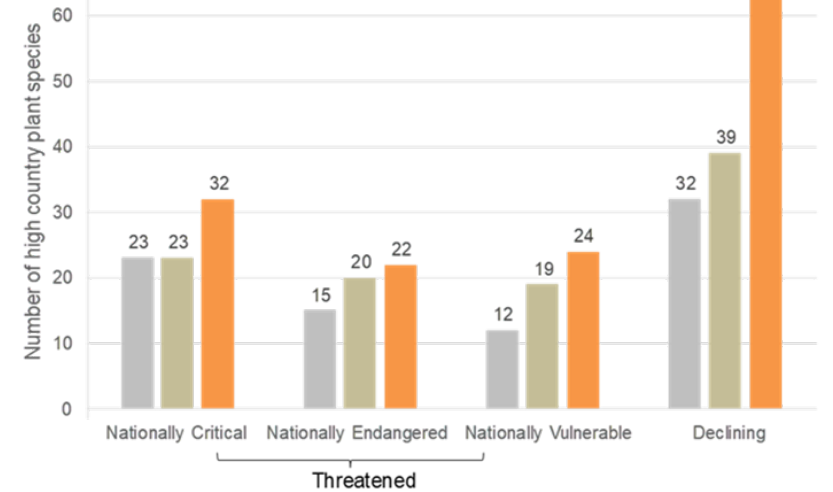
Protected area network



Threatened ecosystems

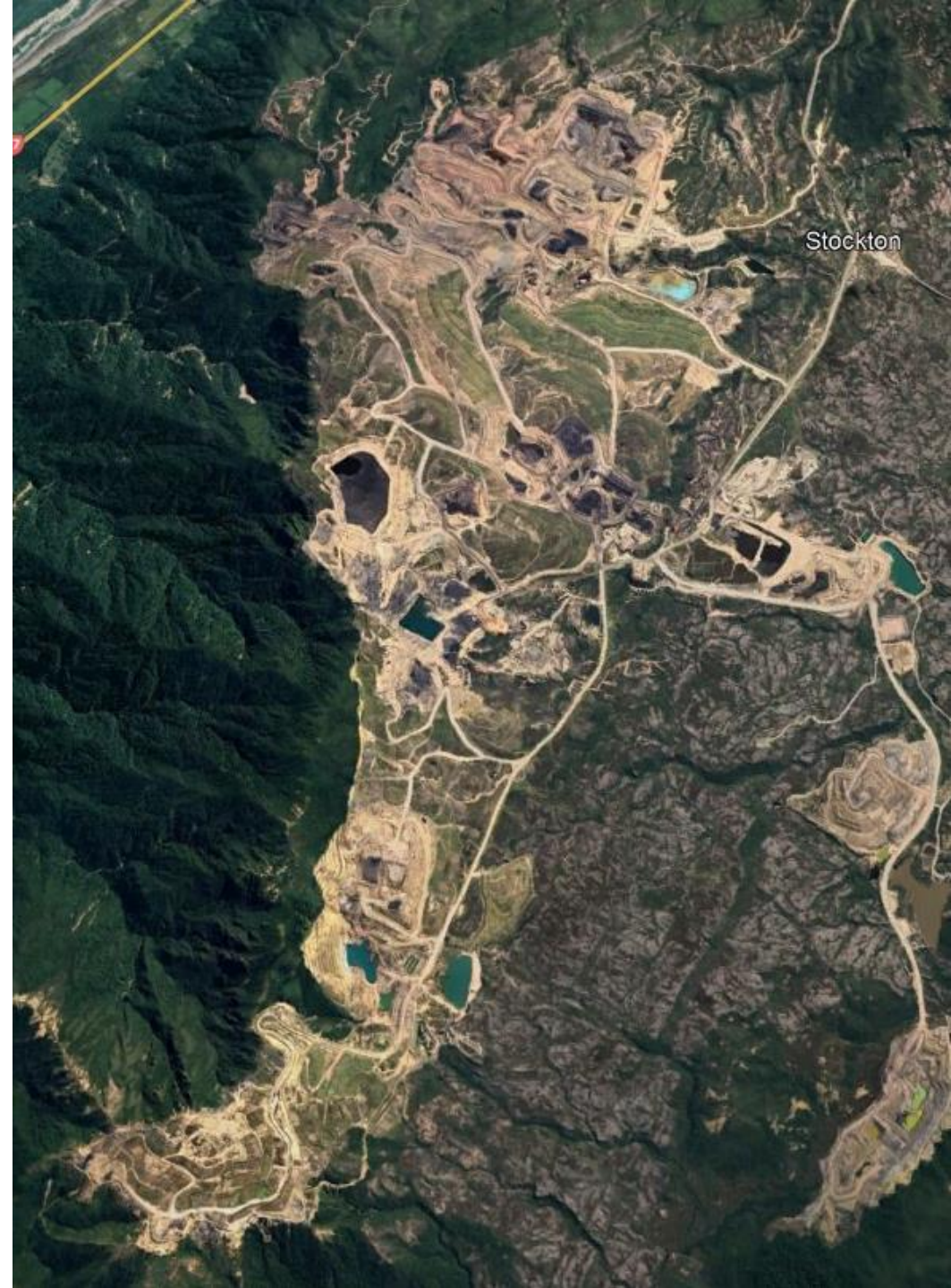


Canterbury Threatened Plants per altitude zone



Politically A Parallel Universe...

- Associate Minister Environment Andrew Hoggard: *“a third of New Zealand is already in the Department of Conservation management. Surely, we can find the significant biodiversity within that third.”*
...”jobs for nature is a slush fund... clearly not needed”.
- Minister Jones - *“Stewardship land is not DOC land”, “largely scrub”,... “covered in vermin”,... “where it has economic potential it should not be excluded ...”* (RNZ Morning Report 16/09/2024)
- Minister for the Environment Penny Simmons *..” the pendulum has swung too far”.*
- RMA reforms: enshrine the *“enjoyment of private property rights” ...” removing red and green tape”, “bonfire of regulation”*
- Etc.



What now for our Natural Heritage ?

- For the RMA?
- For Crown pastoral lease?
- For Stewardship land?
- For environmental bottom lines?



Representativeness?

National Parks Act 1980:

National parks are “areas of New Zealand that contain scenery of such distinctive quality, ecological systems, or natural features so beautiful, unique, or scientifically important that their preservation is in the national interest.”

National Parks

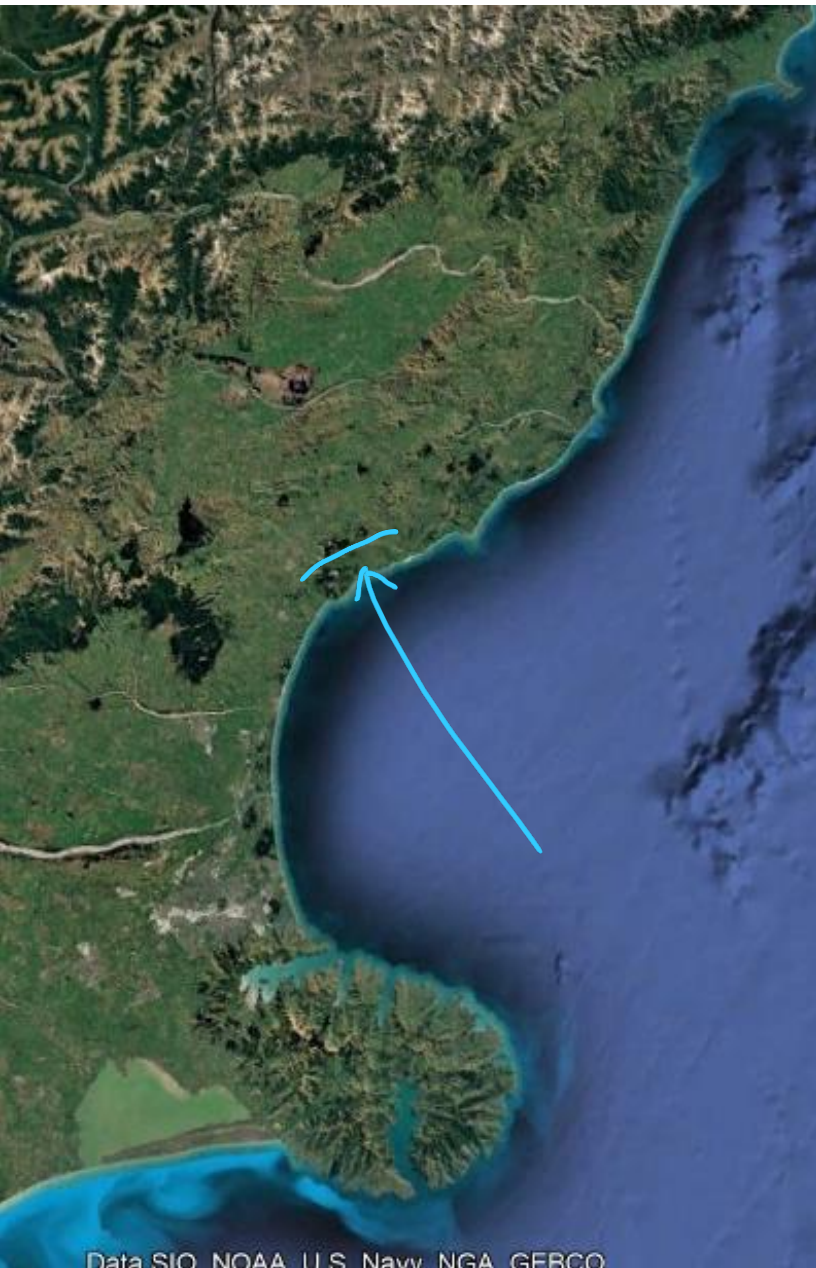




The 5 natural wonders!!

Mt Cass limestone complex

- Private land
- Consented wind farm

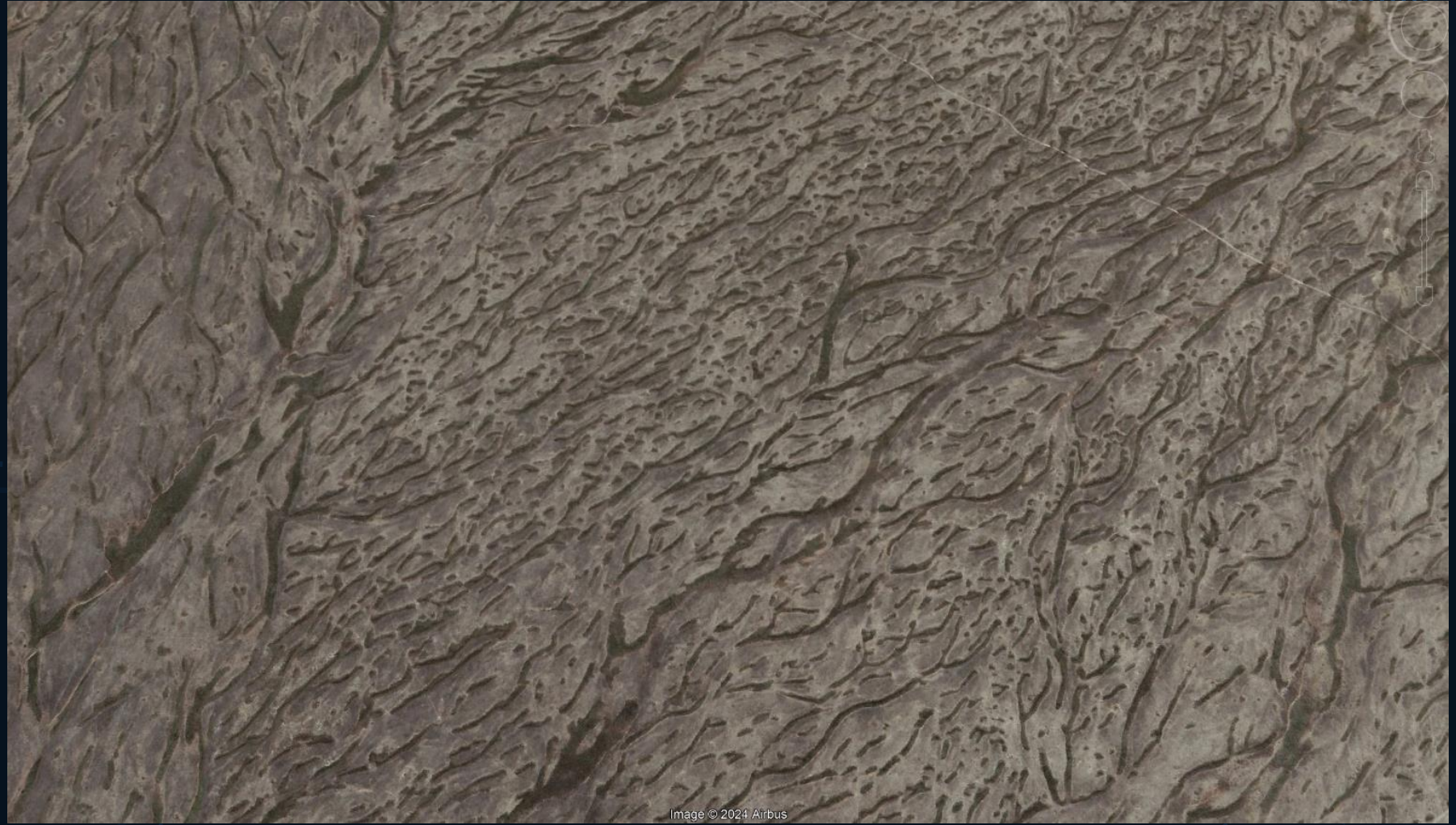












Tekapo outwash plain

- Pastoral lease
- Adjoins Tekapo Scientific Reserve
- Recommended full protection Tenure Review now stopped











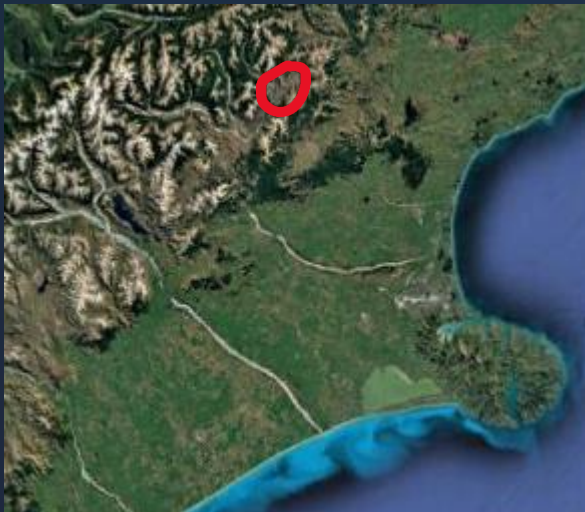
Glenmore Moraines and kettlehole complex

- pastoral lease
- recommended for protection through TR
- protection hiatus









Mt White Station

- Pastoral lease
- Recommended full protection
- Protection hiatus
- Contiguous with APNP











A wide-angle landscape photograph of a mountain valley. In the foreground, a river with a braided, rocky bed flows through a lush green forest. The middle ground shows steep, forested slopes leading up to high, rugged mountains. The peaks are partially covered in snow, and the sky is a clear, bright blue. The overall scene is a mix of natural beauty and wilderness.

Beech gap cedar forests

- Rakaia headwaters
- Stewardship land
- Contiguous APNP





Conclusions

- **Mt Cass limestone, Tekapo outwash, Glenmore moraines, Mt White flora terraces, beech gap cedar forests; ... all outstanding examples of our natural heritage and are of National Park quality.**
- **None are adequately protected if at all; all are vulnerable to loss and degradation.**
- **There are many other similarly significant and vulnerable sites across the country.**

Acknowledgements

Jane Gosden, Debra Wootton,
Melissa Hutchinson, Mike Harding,
Susan Walker